

WATER RATIONING PROBABLE

With the metroplex so far behind in its rainfall, many cities may be forced to implement either water rationing or water restrictions. Anticipating this, Precision has several ideas to help us all.

1. We will set the irrigation clocks to water with less frequency but greater amounts but not increase net amount. (Water deeply & less often.)

2. The fertilizer we will be using will have a higher potassium content. Both of these will help roots of all plants go deeper into the soil.

3. When we plant seasonal color we always add compost which helps with water penetration. Numbers 1-3 will not have any additional costs to you.

4. Precision can also perform more detailed evaluations of irrigation systems. They can pinpoint deficiencies that, if corrected, can result in significantly lower water runoff.

5. We can also add products to our seasonal color plantings. One is a product containing beneficial fungi and bacteria that inoculates plants and soil for better fertility and improved water and nutrient absorption. Another is a superabsorbent polymer that absorbs hundreds of times its weight in water and then slowly releases it to the plant. There is a small charge for these 2 products which are best used together.



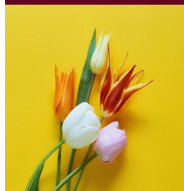
March/April 2006

Precision Notes

2222 Valwood Parkway, Dallas, Tx. 75234
972-241-3789 972-241-6616 (fax) www.precisiondallas.com

WELCOME NEW CUSTOMERS

Welcome to the following new customers.
We are happy to serve you!



- Arapaho Central
- Crossmark
- Energy Square II & III
- Low Iron Crossing
- Mockingbird Station
- EDS Baccus Park
- 14801 Quorum
- One Hanover
- Judd Court
- The Stockyards
- Millennium Center
- Royal Tech Center
- Highlands Shopping Center

CHEMICAL DEPT.

Congratulations to Abraham Vasquez who passed his test from TDA for his Commercial Chemical Applicators License.

During March and April this department will be applying fertilizer to beds plus post-emergents on Ryegrass properties. Bed pre-emergents will be completed in early March.

WEBSITE UP AND RUNNING

Our new website is now up and functioning. Please visit us at www.precisiondallas.com and let us know what you think. Among the features, you can send us service requests as well as look up photos of plants and plant combinations.

You can also sign up to receive our newsletters electronically there or at suzanne@precisiondallas.com.

E-MAIL REQUEST

Faxes are being phased out as our way of communicating with customers in favor of e-mail. This is still in the gathering stage. Please e-mail us at precisiondallas.com to let us know what your address is so that our communications will arrive at your computer. If you have a spam blocking program, please let it know that our address is not spam.

QUOTES AND NOTES

- Courage is what it takes to stand up and speak; courage is also what it takes to sit down and listen. -Winston Churchill
- Courage is contagious. When a brave person takes a stand, the spines of others are stiffened. -Billy Graham
- Success seems to be largely a matter of hanging on after others have let go. -William Feather
- Keep away from people who try to belittle your ambitions. Small people always do that, but the really great make you feel that you, too, can become great. -Mark Twain
- There is no statute of limitations on righting a wrong. -unknown
- Striving for success without hard work is like trying to harvest where you haven't planted. -David Bly

PLANTING CONTAINERS: PART 1 in a series

Container plantings can be versatile and useful in many ways. They can be mentioned, height, color, and help even a modest, homely plant become a focal point.

Because of their relatively small sizes they can be easy to move, allowing differing looks for varying moods and special events.



If you need to add height where it may be difficult to get just the right size plant, a container can be used to achieve the exact level required. Using differing heights of containers can give a small space a sense of depth and dimension that may not be achieved in the ground.

Don't be afraid to place a container in a bed. It can add di-

Sometimes there just isn't any soil available in which to plant. Home builders are notorious for putting concrete where the homeowner dearly wishes there was a space in which to plant and irrigate. Containers are an answer!

LANDSCAPE DEPT.

The Landscape Dept. will begin planting spring color around the middle to late March. It typically takes us 6 weeks to get the color installed on all of our properties.

Home Garden Tips

- If you haven't cut back your Liriope, do it the 1st week in March. But be careful if some new leaves have begun to emerge. Any damage to leaves will be there the entire year.
- If you haven't cut back shrub Roses, do this chore the first week in March also. (Mid to late Feb. is best.) Cut them back by 50%. Climbing Roses should be cut back after they bloom and not as severely. Fertilize them monthly and watch for diseases and insects throughout the season.
- Cool season vegetables can be planted in early March. This includes onions, snap peas, asparagus, lettuce, radishes, carrots, spinach, chard, and turnips.
- Warm season vegetables can be planted late March/early April. These include tomatoes, beans, corn,



RECIPE CORNER

EASY, BAKED MANICOTTI (serves 6)

2 Cups spaghetti sauce, divided

1 3/4 cups Ricotta cheese

1/2 cup grated Parmesan cheese

1 egg lightly beaten

1 1/2 cups shredded Mozzarella cheese

1/4 cup basil pesto sauce

12 COOKED manicotti shells, rinsed in cold water

Preheat oven to 350 degrees. Cook manicotti shells according to package directions. Put 3/4 cup spaghetti sauce in bottom of 13x9" baking dish. Mix well the egg, all cheeses, and pesto sauce. Put cheese/egg mixture in clean plastic bag with one of the corners cut off to pipe into the manicotti shells. Fill the shells from both sides to make sure there are no gaps in filling. Place over sauce in pan. Pour remaining sauce over stuffed shells. Cover with foil and bake 40 minutes. (from the file of Adrienne Bonds from kraftfoods.com)